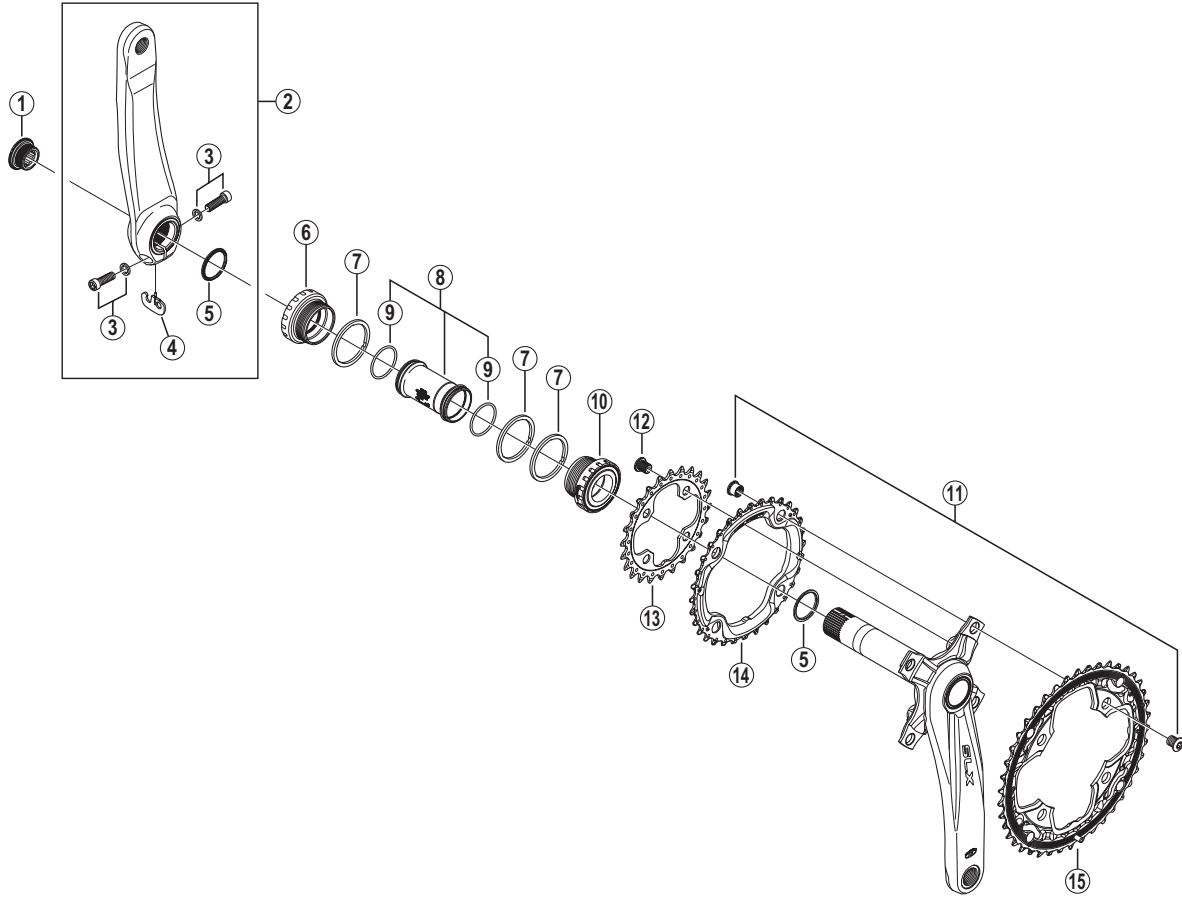


SHIMANO SLX Front Chainwheel

FC-M660-10



• Bolt circle diameter: 104 mm...(For outer gear and middle gear), 64 mm...(For inner gear)

ITEM NO.	SHIMANO CODE NO.	DESCRIPTION	INTERCHANGEABILITY	
1	Y1F811100	Crank Arm Fixing Bolt	A	A
2	Y1KF98010	Left Hand Crank Arm 170 mm	B	A
	Y1KF98020	Left Hand Crank Arm 175 mm	B	A
3	Y1KS98030	Clamp Bolt (M6 x 19) & Washer	B	A
4	Y1FU98120	Plate	A	A
5	Y1F316000	Ring	A	A
6	Y1J198080	Left Hand Adapter (B.C.1.37" x 24T) English Thread	A	A
7	Y1F813000	Spacer (2.5 mm)	A	A
8	Y1E598210	Inner Cover & O-Ring	A	A
9	Y1TF21000	O-Ring	A	A
10	Y1J198090	Right Hand Adapter (B.C.1.37" x 24T) English Thread	A	A
11	Y1KF98030	Double Gear Fixing Bolt (TORX®**/M8 x 8.5) & Nut (4 sets)	B	A
12	Y1LU98010	Inner Gear Fixing Bolt (TORX®**/M8 x 8.5 / 4 pcs.)	B	B
13	Y1LU24000	Chainring 24T-AE (Black)	B	
14	Y1LU98020	Chainring 32T-AE	B	
15	Y1LU98030	Chainring 42T-AE (Black)	B	

A: Same parts.

B: Parts are usable, but differ in materials, appearance, finish, size, etc.

Absence of mark indicates non-interchangeability.

** TORX is a registered trademark of Camcar LLC.

Mar.-2010-3052
© Shimano Inc. I

Specifications are subject to change without notice.

SHIMANO