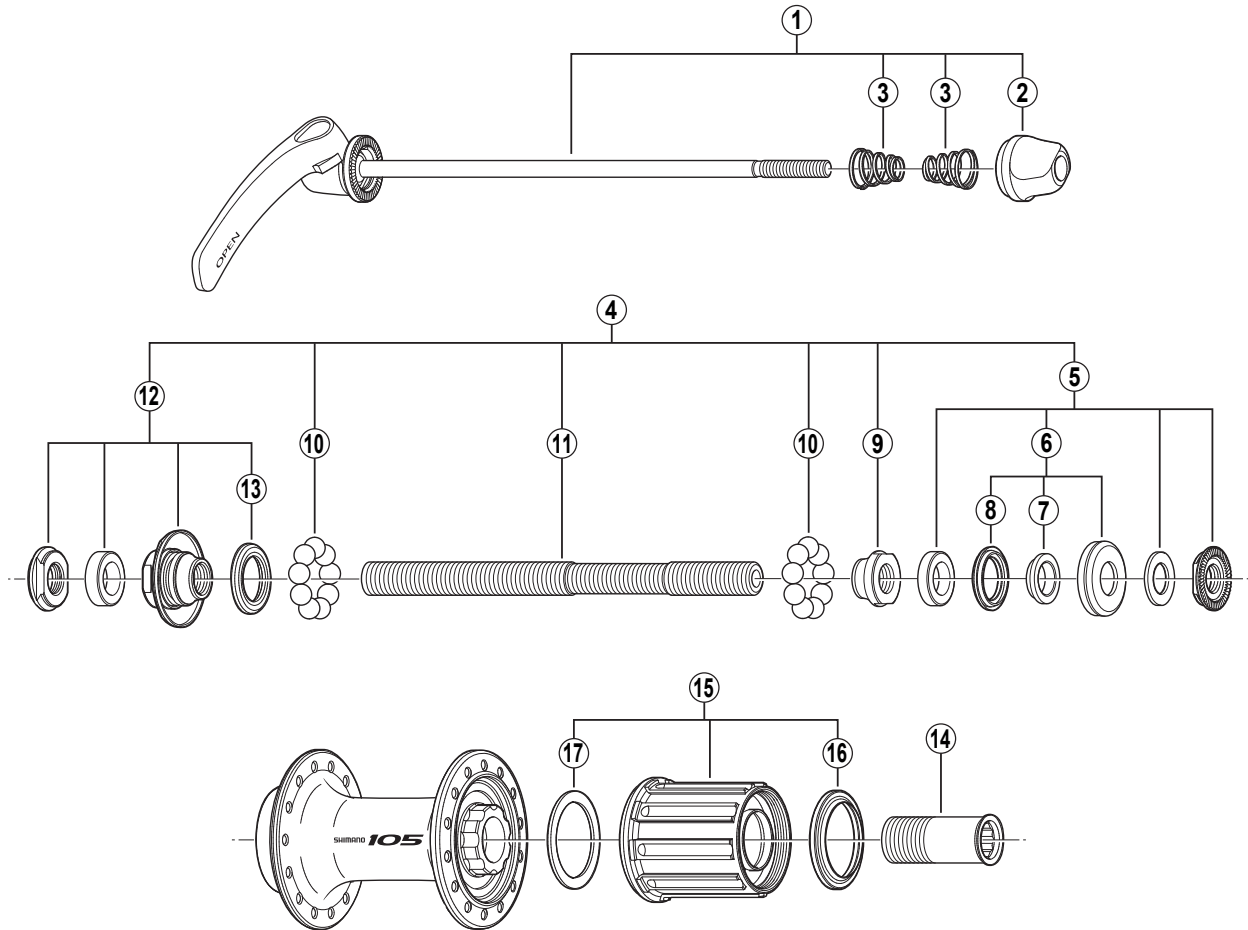


SHIMANO 105 Freehub (8/9/10-Speed)

FH-5600 Silver Version

FH-5600-L Black Version



• Over Lock Nut Dimension: 130 mm (5-1/8")

ITEM NO.	SHIMANO CODE NO.	DESCRIPTION	INTERCHANGEABILITY	
			FH-5600	FH-5600-L
* 1	Y-3CJ 98010	Complete Quick Release 163 mm (6-13/32") / Silver for FH-5600	B	B
	Y-3D7 98010	Complete Quick Release 163 mm (6-13/32") / Black for FH-5600-L	B	B
2	Y-23W91100	Quick Release Nut	A	A
3	Y-231 11000	Volute Spring	A	A
4	Y-3CJ 98020	Complete Hub Axle 141 mm (5-9/16")	B	B
5	Y-3CJ 98030	Right Hand Lock Nut Unit	B	A
6	Y-3CJ 98040	Right Hand Dust Cap Unit		A
7	Y-31V 03000	Right Hand Axle Spacer 3.7 mm		A
8	Y-214 06000	Right Hand Seal Ring	A	A
9	Y-3AE 03000	Right Hand Cone (M10 x 9 mm)	B	A
10	Y-000 91310	Steel Ball (1/4") 18 pcs.	A	A
11	Y-30K 01100	Hub Axle 141 mm (5-9/16")	B	A
12	Y-3CJ 98050	Left Hand Lock Nut Unit	A	A
13	Y-377 10000	Left Hand Seal Ring	A	A
14	Y-359 04000	Body Fixing Bolt	A	A
15	Y-3CJ 98070	Complete Freewheel Body	B	A
16	Y-3C7 03000	Sub Unit Rubber Seal	A	A
17	Y-375 04000	Freewheel Body Washer	A	A

A: Same parts.

B: Parts are usable, but differ in materials, appearance, finish, size, etc.

Absence of mark indicates non-interchangeability.

0802-2458B

Specifications are subject to change without notice.

SHIMANO