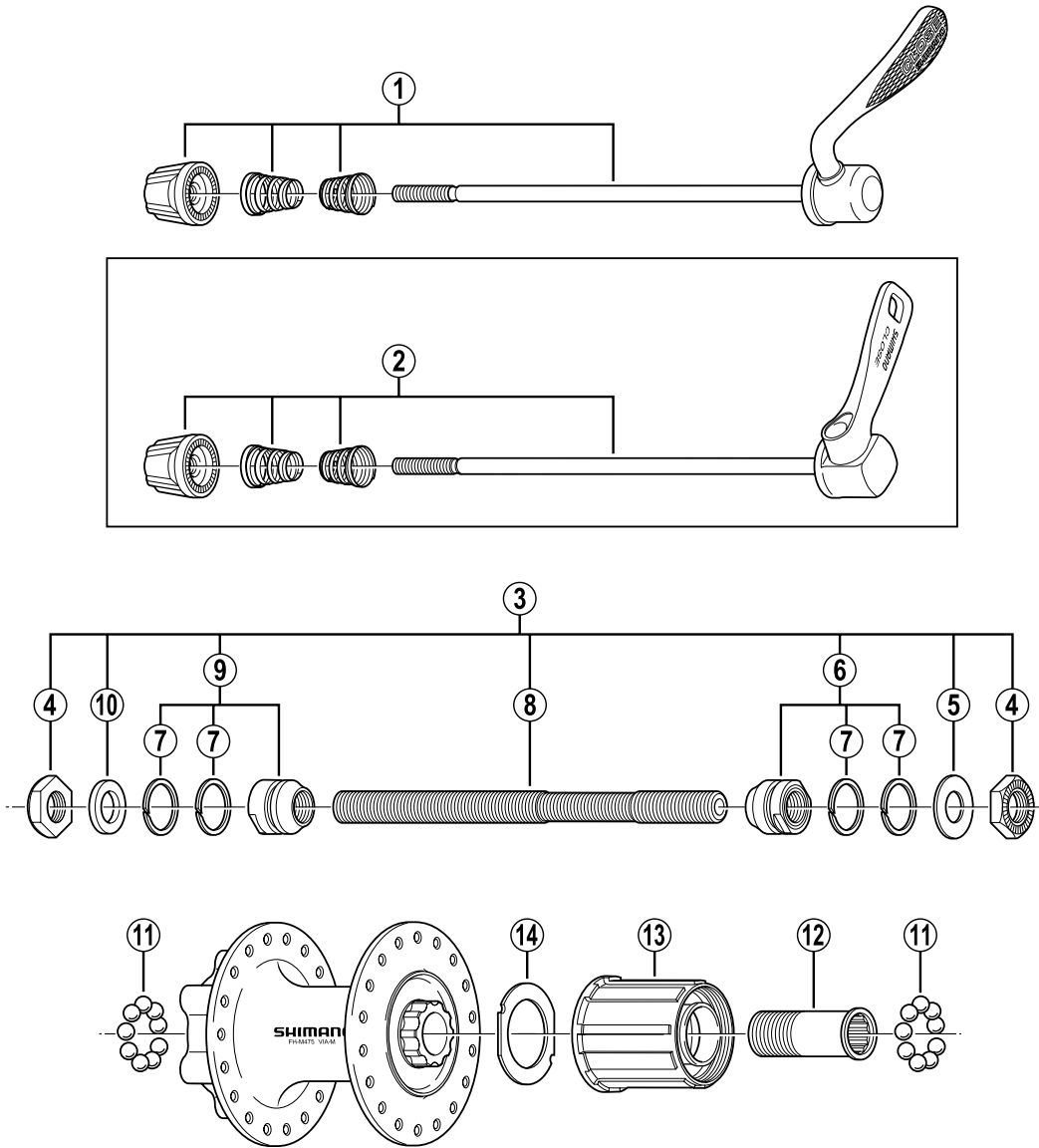


SHIMANO Freehub (for Disc Brake / 8 or 9-Speed)

FH-M475-S Silver Version

FH-M475-L Black Version



Q'TY	ITEM NO.	SHIMANO CODE NO.	DESCRIPTION
	1	Y-3B5 98010	Complete Quick Release 166 mm (6-17/32") for FH-M475-S/M475-L
	1	Y-3B5 98020	Complete Quick Release 170 mm (6-11/16") for FH-M475-S/M475-L
	2	Y-3SP 98020	Complete Quick Release 173 mm (6-13/16") for FH-M475-L
	3	Y-3B5 98030	Complete Hub Axle 146 mm (5-3/4")
	4	Y-220 05011	Serated Lock Nut 4.5 mm
	5	Y-3AC 09000	Right Hand Washer 0.5 mm
	6	Y-30G 90500	Right Hand Cone (M10 x 15 mm) & Seal Rings
	7	Y-299 05000	Seal Ring
	8	Y-30K 01200	Hub Axle 146 mm (5-3/4")
	9	Y-220 98080	Left Hand Cone (M10 x 15 mm) & Seal Rings
	10	Y-301 06100	Left Hand Washer 2.3 mm
	10	Y-301 06300	Left Hand Washer 1.9 mm
	11	Y-000 91310	Steel Ball (1/4") 18 pcs.
	12	Y-3BL 03000	Body Fixing Bolt
	13	Y-3SL 98030	Complete Freewheel Body w/Right Hand Dust Cap
	14	Y-3AN10000	Freewheel Body Washer

Over Lock Nut Dimension: 135 mm (5-5/16")