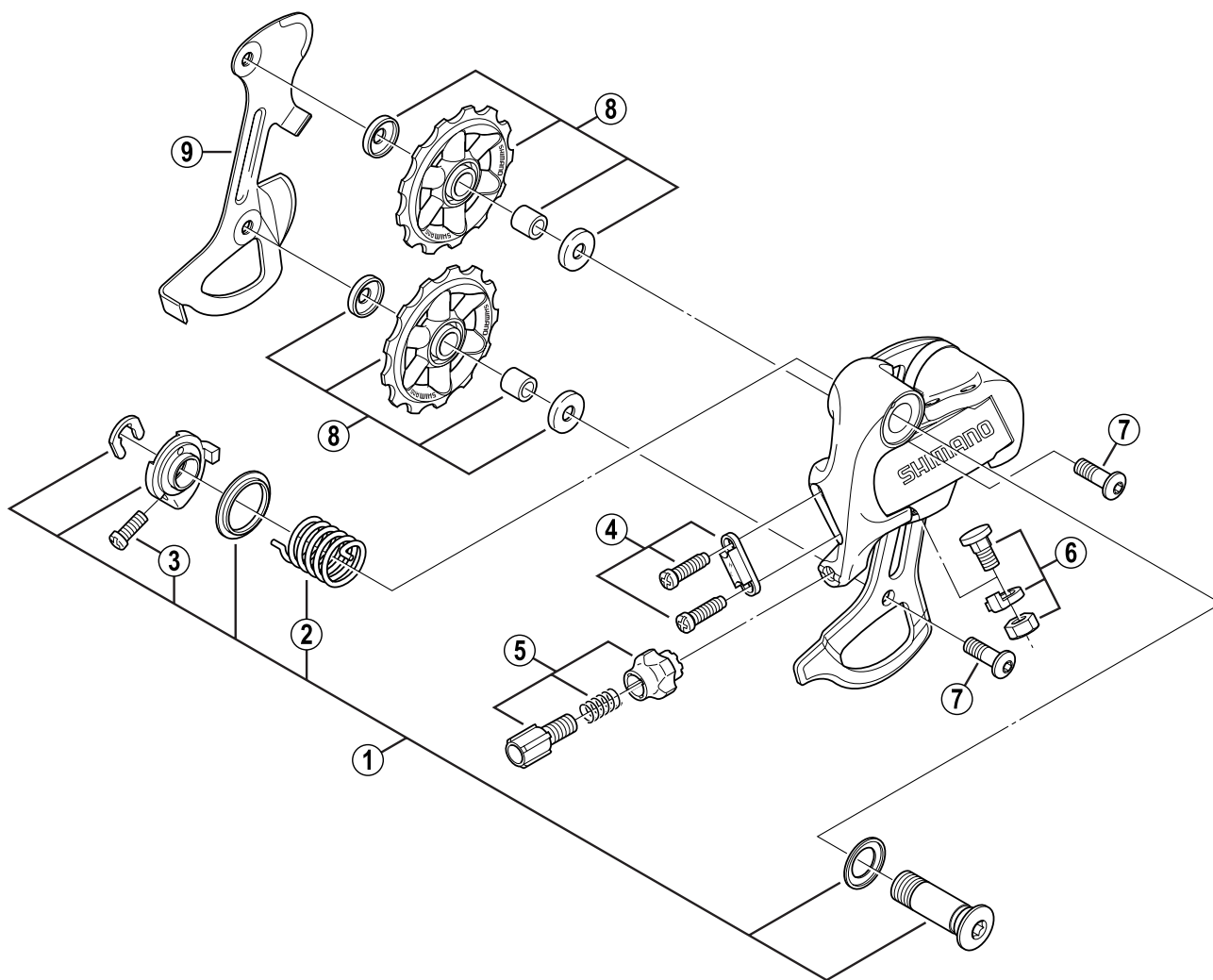


SHIMANO Rear Derailleur
RD-2200 8-Speed



Q'TY	ITEM NO.	SHIMANO CODE NO.	DESCRIPTION
	1	Y-5UX 98010	B-Axle Assembly
	2	Y-5UX 13000	B-Tension Spring
	3	Y-5T8 22000	B-Tension Adjusting Screw (M4 x 12)
	4	Y-5TK 98020	Stroke Adjusting Screws (M4 x 14.5) & Plate
	5	Y-5T8 98020	Cable Adjusting Bolt Unit
	6	Y-5T8 98030	Cable Fixing Bolt Unit
	7	Y-5TW35010	Pulley Bolt (M5 x 14.5)
	8	Y-5T8 98040	Pulley Unit
	9	Y-5UX 15000	Inner Plate